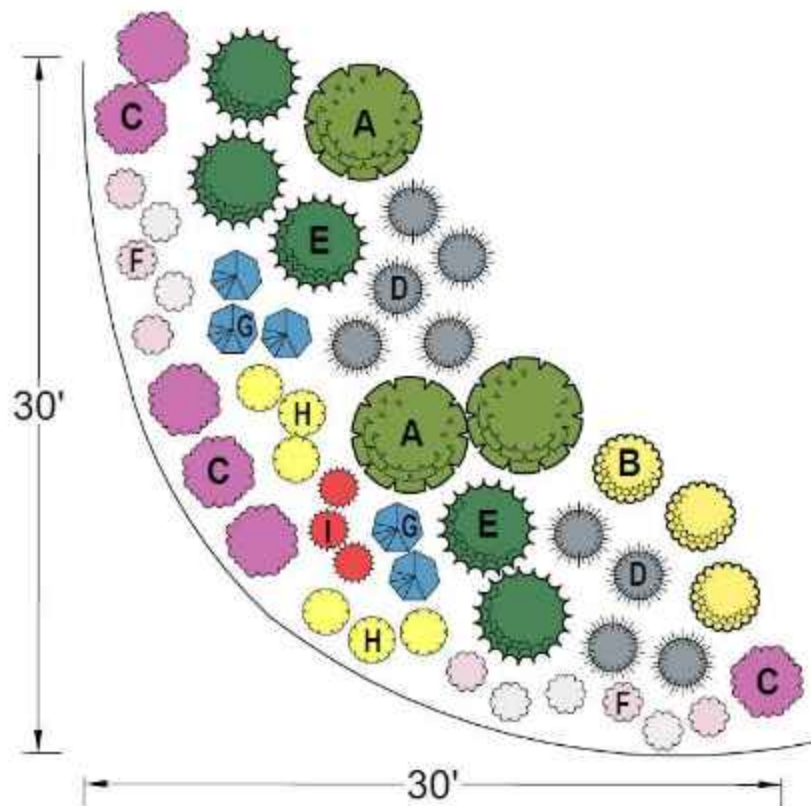


## COLORADO WATERSMART NATIVE BORDER

This shrub and perennial border features species and selections of native plants from the drier regions of Colorado. The plants chosen will provide interest in all seasons and evoke the natural beauty of our prairie and foothill habitats.

The water needs of the plants in this border are very low and once established irrigation would only be advised when extended periods of dry and warm weather occur. The design layout can be repeated to cover longer bed areas.



### PLANT LIST:

Plant Select<sup>®</sup> plants are in bold

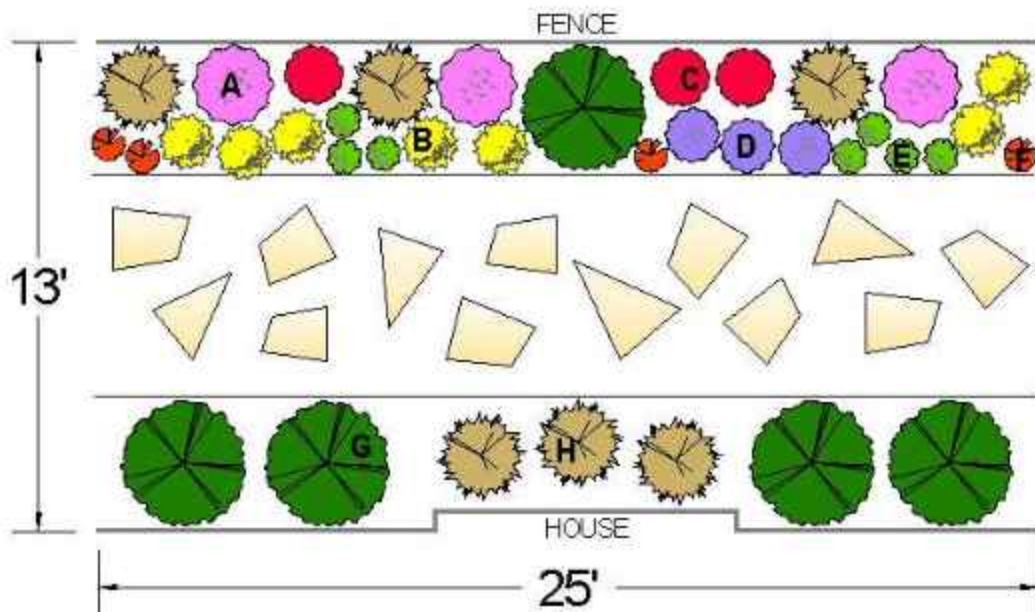
- A. **Apache Plume** -or- Tall Blue Rabbitbrush (3)
- B. **Baby Blue Rabbitbrush** -or- Dwarf Leadplant (3)
- C. **Winecups** -or- Colorado Four O'Clock (5)
- D. **Blonde Ambition Blue Grama Grass** -or- The Blues Little Bluestem Grass (9)
- E. **Panchito Manzanita** -or- Soapweed Yucca (5)
- F. **Prairie Lode Sundrops** -or- Tufted Evening Primrose (11)
- G. **Grand Mesa Penstemon** -or- Rocky Mountain Penstemon (5)
- H. **Kannah Creek Buckwheat** -or- Prairie Coneflower (6)
- I. **Bridges' Penstemon** -or- Plains Gayfeather (3)

# SIMPLE SOLUTIONS FOR SMALL SPACES

Waterwise designs created for smaller areas of your landscape.  
For larger areas, repeat the design for whatever length is necessary.

## BETWEEN THE HOUSES GARDEN

Shady areas are often the most difficult to design for in the West. This garden is loaded with bold color and is perfect for areas between two homes in a north-south facing location, or a border that only receives dappled shade. Ideally, the garden should receive at least 3-4 hours of sunlight. Most of the plants are adaptable to many soil types and handle dry conditions once established. Denver Gold® columbine and Snow Angel coral bells perform best with some extra water during dry spells. The coral bells and viburnum thrive in loamy soil - amendments should be added to clay soils at planting time.



## SIMPLE PLANT LIST:

- A. Cashmere sage (3)
- B. DENVER GOLD® columbine (7)
- C. Red birds in a tree (3)
- D. SHADOW MOUNTAIN® penstemon (3)
- E. Snow Angel coral bells (7)
- F. Hummingbird trumpet mint (4)
- G. Mini Man™ dwarf Manchurian viburnum (5)
- H. Korean feather reed grass (6)

Once established, fill in any empty spaces with Corsican violet.

SIMPLE.  
SMART.  
STUNNING.



### Designer Carla Tews

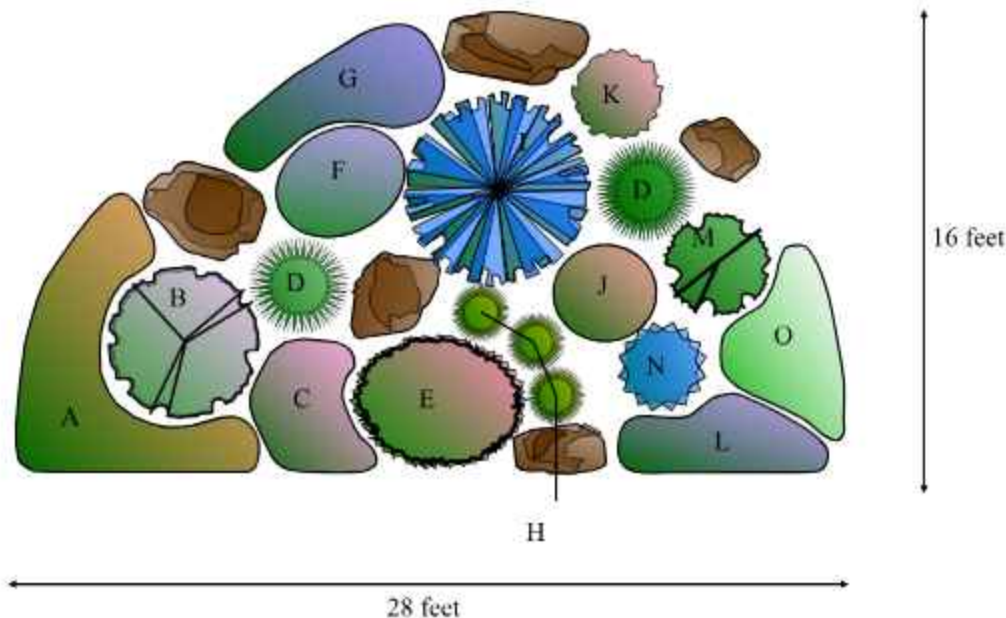
Carla Tews is the owner/operator of Green Roots Garden Design. As a horticulturist, garden designer and conservationist, she focuses on building sustainable landscapes and pollinator-friendly habitats for residential and commercial clients along the northern Colorado Front Range.

[www.greenrootsgardendesign.com](http://www.greenrootsgardendesign.com)

Fort Collins, CO (970) 237-1374

**ROCK GARDEN**

This raised xeriscape garden is in full sun and visible from all sides. The boulders, native grasses and “evergreen” plants, Bluestem Joint Fir, Mock Bearberry and Parry’s Century Plant, give this garden plenty of winter texture and interest. A native Cowboy’s Delight (Sphaeralcea coccinea) meanders thru the garden. Spring bulbs of Tete A Tete Daffodils, Crocus, and small species tulips add extra bloom time, and TABLE MOUNTAIN® ice plant will bloom in November on our warm ‘Indian Summer’ days.



**PLANT LIST:**  
Plant Select® plants are in bold

- A. **ORANGE CARPET**® Hummingbird Trumpet -or- 'Angelina' Sedum
- B. **PAWNEE BUTTES**® Sand Cherry -or- 'Powis Castle' Artemisia
- C. **TABLE MOUNTAIN**® Ice Plant -or- **MESA VERDE**® Ice Plant
- D. Stipa Feather Grass -or- Blue Oat Grass
- E. 'Winter Glow' Prickly Pear Cactus -or- Colorado hedgehog cactus
- F. Variegated Iris -or- German Iris
- G. **Corsican Violet** -or- **COLORADO GOLD**® Gazania
- H. Colorado Blue Grama Grass -or- 'Boulder Blue' Blue Fescue
- I. **Bluestem Joint Fir** -or- **SPANISH GOLD**® Broom
- J. **RED ROCKS**® Penstemon -or- Rocky Mountain Penstemon
- K. **MONGOLIAN BELLS**® Clematis -or- Furman's Red Sage
- L. Turkish Veronica -or- **CRYSTAL RIVER**® Veronica
- M. **Mock Bearberry** Manzanita -or- Crimson Pygmy Barberry
- N. Parry's Century Plant -or- Pale-leaf Yucca
- O. Lamb's Ear 'Helene von Stein' (Big Ears) -or- **Sea Foam** Artemisia

Shalene Hiller received her bachelor degree from Colorado State University Landscape Design Program. She has worked all facets of the industry from design to perennial production to maintenance. She is currently Horticultural Specialist for the City of Westminster. You can see her gardens at Legacy Ridge and The Heritage at Westmoor Golf Courses



Find more designs and inspiration at [plantselect.org](http://plantselect.org)!